



**TECHNOLOGY
IN MOVEMENT**



UNMATCHED MRI COMPATIBILITY

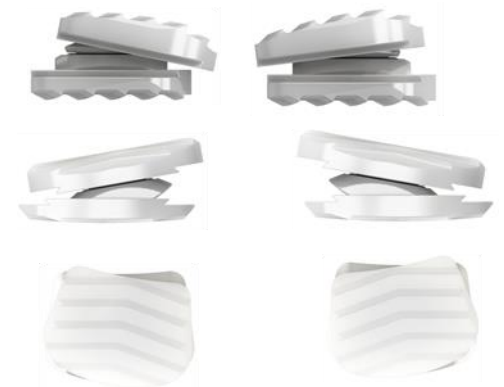
- 100% metal free
- Best choice for post-op controls



NATURAL KINEMATIC & SHOCK ABSORPTION

Unconstrained prosthesis

- 2 rotation centers
- Flexion/extension and lateral bending movements



MECHANICAL RESISTANCE

- Lowest friction bearing thanks to couple ceramic/ceramic
- High biocompatibility



100% STERILE INSTRUMENTATION

<p>RANGE OVERVIEW</p> <p>GRANVIA-C</p>	<p>FOOTPRINTS: Small (15x13mm) – Medium (17x14mm) – Large (20x15mm)</p> <p>HEIGHTS: 4,3mm (Small only) – 5mm – 6mm – 7mm</p>
--	--