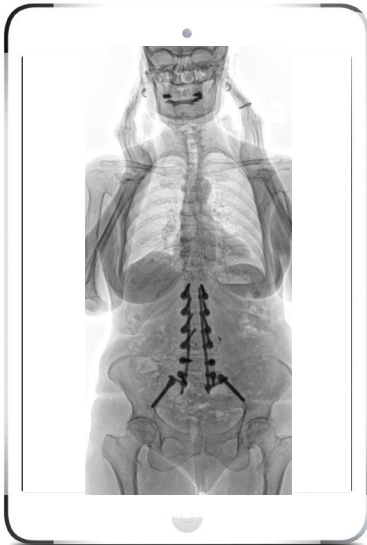




DO MORE
WITH LESS

WHY SHOULD YOU COMPROMISE SAGITTAL BALANCE?



CONNECTION AT DISTANCE FROM THE SPINE

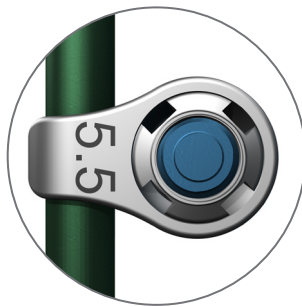
The rod is connected in an easy way to the PASS LP® anchorages, on threaded polyaxial posts and flexible guides

LOAD SHARING

A gentle progressive correction thanks to the ST2R technique (Simultaneous Translation on 2 Rods)

SURGEON-FRIENDLY

A compact and optimized instrumentation allow to cover all indications



**FIRST
LOOK
PASS LP
OFFERING**

Full polyaxiality: This is the most complete range of polyaxial anchorages with screws, self-stable hooks/claws, sacral plates and iliac fixation.

Complete range to cover all indications: deformities (scoliosis, kyphosis,...), degenerative,(DDD, spondylolisthesis), trauma, tumors, a system to cover all the indications.

Lowest profile: the PASS LP® offers the lowest profile polyaxial spinal system on the market.